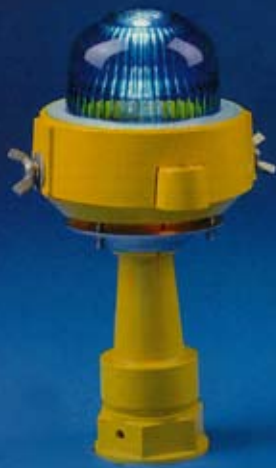


Fig. 1: Taxiway Edge Low Intensity Elevated Light



Compliance with Standards

FAA: L-861 T specification, AC 150/5345-46A

ICAO: Annex 14, Vol. I, Par. 5.3 for use as taxiway and apron edge light.

NATO: In compliance with STANAG 3316.

Use

Edge lighting of taxiways and aprons serving runways of all categories.

Features

- Optimal resistance to jet blast due to low profile and reduced dimensions.
- Watertight without gaskets. Dome sealed in the upper body.
- Smooth external dome surface prevents built-up of dirt. Dome is self-cleaning.
- Easy relamping without special tools. Upper body/lens assembly removed in 10 sec. No clamping ring nor gaskets to care about.
- Accurate and easy levelling thanks to the polyester balljoint.
- No twisting of cables during installation. Frangible stem screws into the mounting device independently from the rest of the light unit.
- Low-energy, long life prefocus halogen lamp.
- Reduced spares holding thanks to simple construction using a minimum number of functional parts.

Construction

1. Blue dome cast in aluminium alloy upper body.
2. Prefocus halogen lamp.
3. Lampholder.
4. Cable strain reliever.
5. Aluminium alloy lower body with flag holder.
6. Polyester ball joint.
7. Stainless steel clamp.
8. Cast aluminium alloy frangible stem.
9. Two-pole plug with wire assembly, FAA L-823.

Finish

- Aluminium die casting: baked polyester powder coating. Aviation Yellow.
- Stainless steel hardware.

Electrical Supply

6,6 A through a 30/45 Watt isolating transformer.

See catalogue leaflet A.06.110.

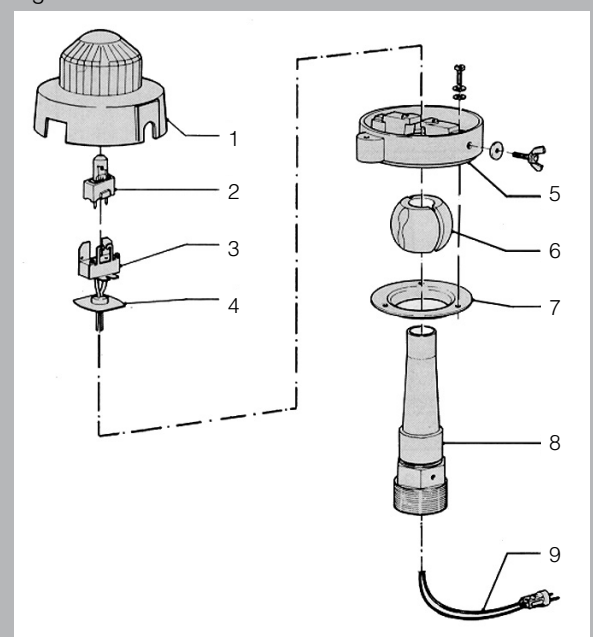
Taxiway Edge Low Intensity Elevated Light

ADB
Airfield Solutions

Fig. 2



Fig. 3



Photometric Performance

Lamps: 30W - 6,6A prefocus halogen - Gy 9,5
1000 hours rated life at full intensity.

VEE-3-030	Colour	Peak Intensity Cd	Average Intensity Cd	Beam Spread	
				Horiz.	Vert.
Taxiway Edge FAA L-861T	Blue	5	3	360°	0 to 6°
Taxi way Edge ICAO	Blue	5	2	360°	0 to 30°

Installation

- On conduit elbow TC-2 (Fig.5)
 - On mounting plate T300/3 (Cat. leaflet A05.111e)
 - On anchor stake PA-2
 - On L-867 steel base (Fig. 6 - Cat. leaflet A.05.120)
- Levelling of the light is easily checked with the purpose-made levelling device supplied on request.

Ordering Code

VEE-3-030 B S

Lamp rating
30W = 030 _____

Colour
Blue = B _____

Special requirements to be specified in full text: S _____

Accessories
Levelling device
Mounting System 750 mm (30") high for snowy areas

Complete, delete or modify as necessary.

Packing Data

VEE-3-030 with blue dome; Net weight: 1,2 kg
9 in cardboard box; 38 x 38 x 25 cm; Gross weight: 12 kg

Suggested Specification

The Taxiway Edge Low Intensity Elevated Light shall comply with FAA L-861 T specification (AC 150/5345-46A) and with ICAO Annex 14, Vol. I, para 5.3. The prefocus halogen lamp shall be 30 W or less, 6,6 A, rated life not less than 1000 hours at full intensity.

The seatite lampholder shall be fitted with lamp retaining straps. Overall height of the light, when installed, shall not exceed 237 mm and its total weight shall be 1,2 kg or less. The body shall be made from aluminium alloy. The blue, through-coloured dome shall be permanently sealed in the upper body, which shall be removable by loosening two wing screws. The frangible light base shall be a one-piece aluminium alloy casting. Watertightness shall be ensured without the use of gaskets. All hardware shall be plain stainless steel.

The electrical wiring shall be high temperature resistant. It shall be possible to level the light without need for special tools. The light shall be suitable for direct installation on any standard mounting system with 2" 11 TPI tapped hole. The dome shall have a smooth external surface to prevent accumulation of dirt. The light shall resist jet blast from the heaviest present-day aircraft, yet shall be frangible on impact.

Fig. 4

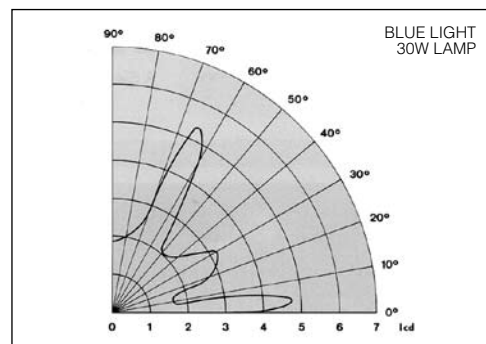


Fig. 5

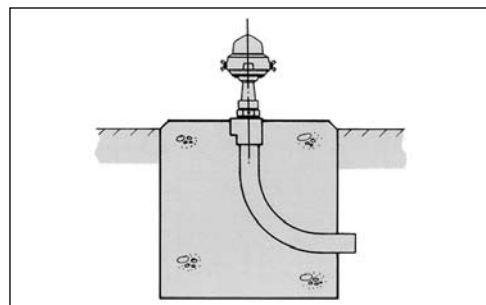


Fig. 6

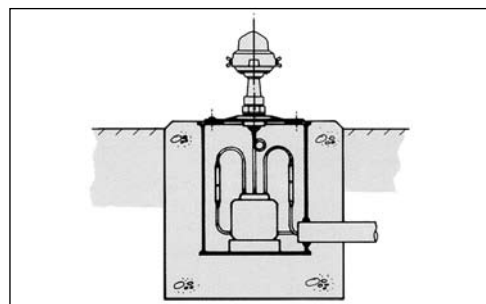
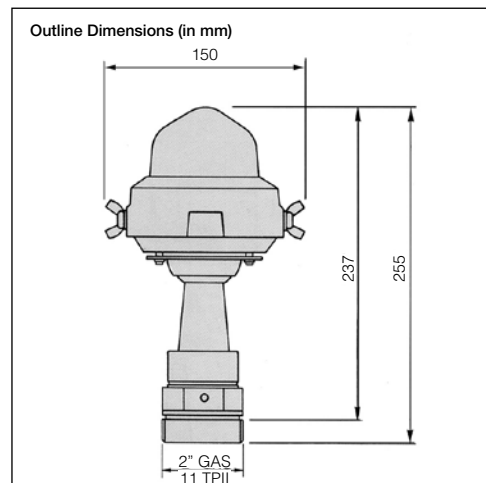


Fig. 7



Registered Office:

ADB
Airfield Solutions
Leuvensesteenweg 585
B-1930 Zaventem
Belgium

Phone: +32 (2) 7221711
Fax: +32 (2) 7221764
info.adb@adb-air.com
www.adb-air.com